

FOR LEASE

600 S. STATE STREET BELVIDERE, ILLINOIS

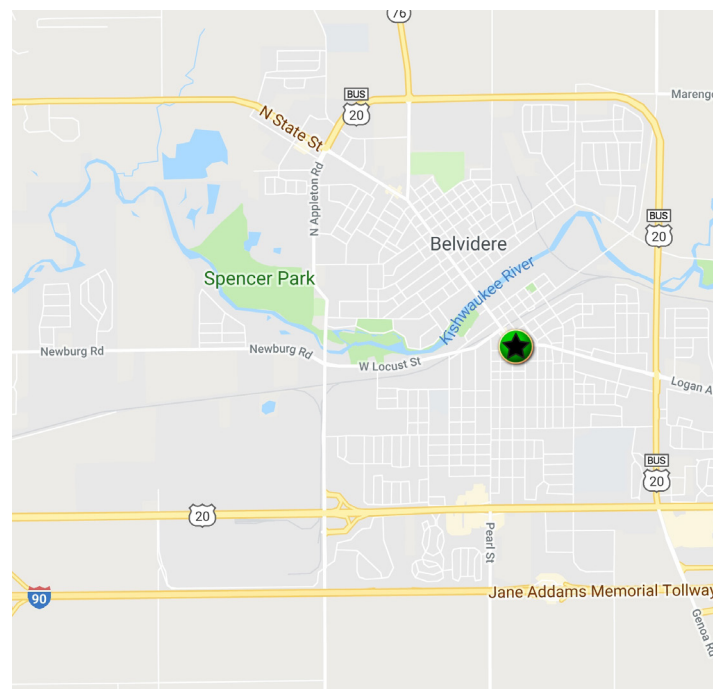


PROPERTY FEATURES

- + 700 - 2,600 RSF available
- + Three story, 29,120 SF professional office building
- + Attractive building with Midland States Bank as anchor tenant
- + Well-constructed building with three-story atrium elevator lobby and continuous windows
- + Plentiful parking with 115 spaces for a ratio of 4.0/1,000 SF
- + Minutes away to Business 20/I-90 interchange
- + Conveniently located at S. State St. and Logan Ave. signalized intersection in the heart of Belvidere



LOCATION MAP



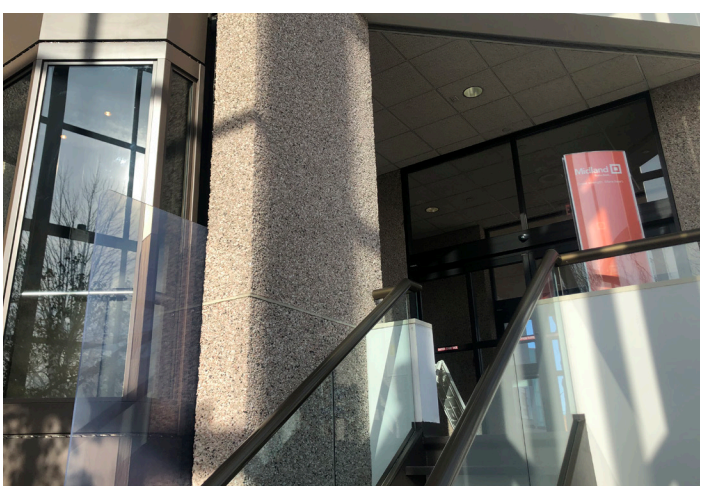
www.cbre.com/karen.walsh

CBRE

FOR LEASE
600 E. STATE, BELVIDERE, IL



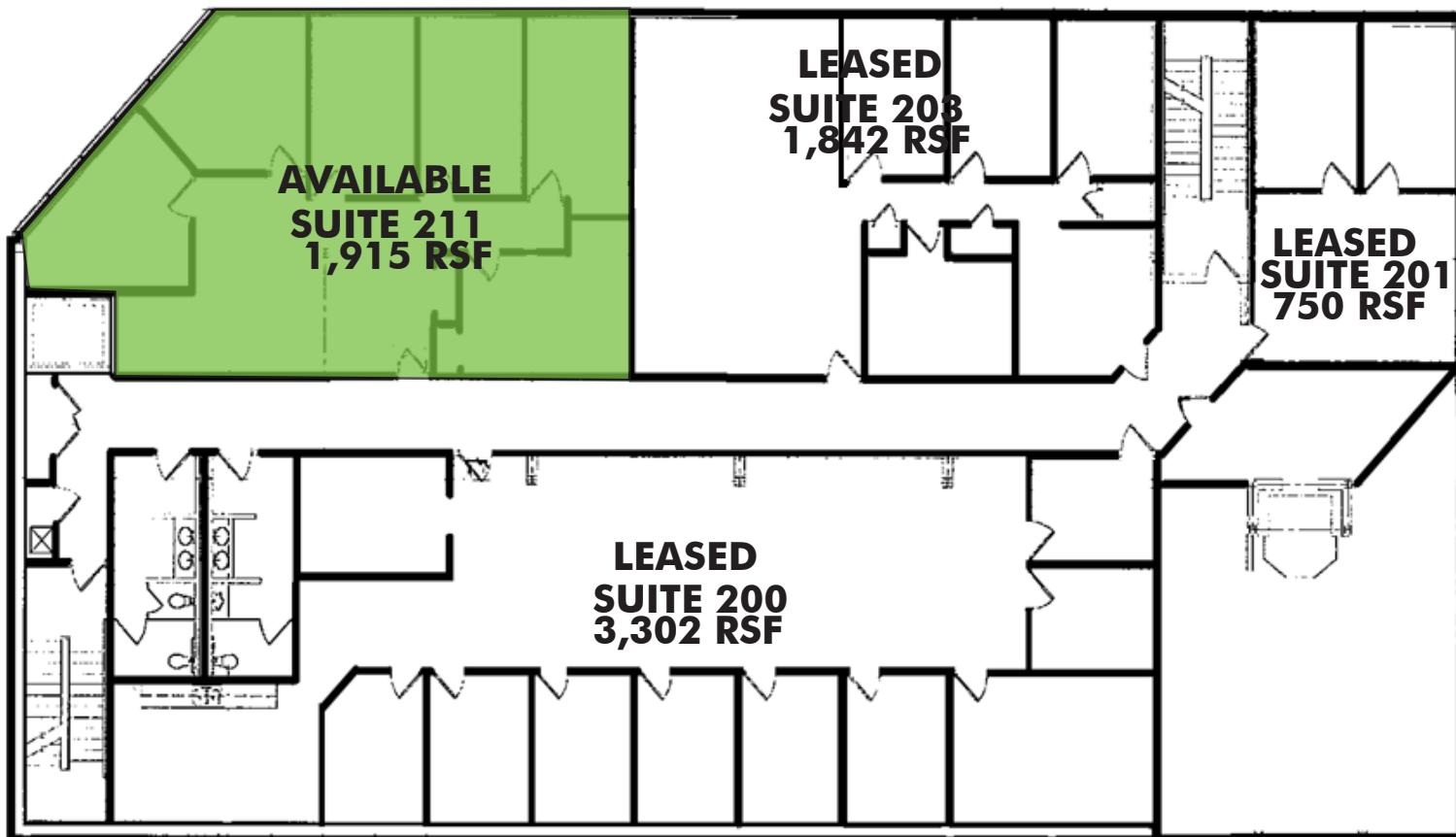
PHOTOS



FOR LEASE
600 E. STATE, BELVIDERE, IL



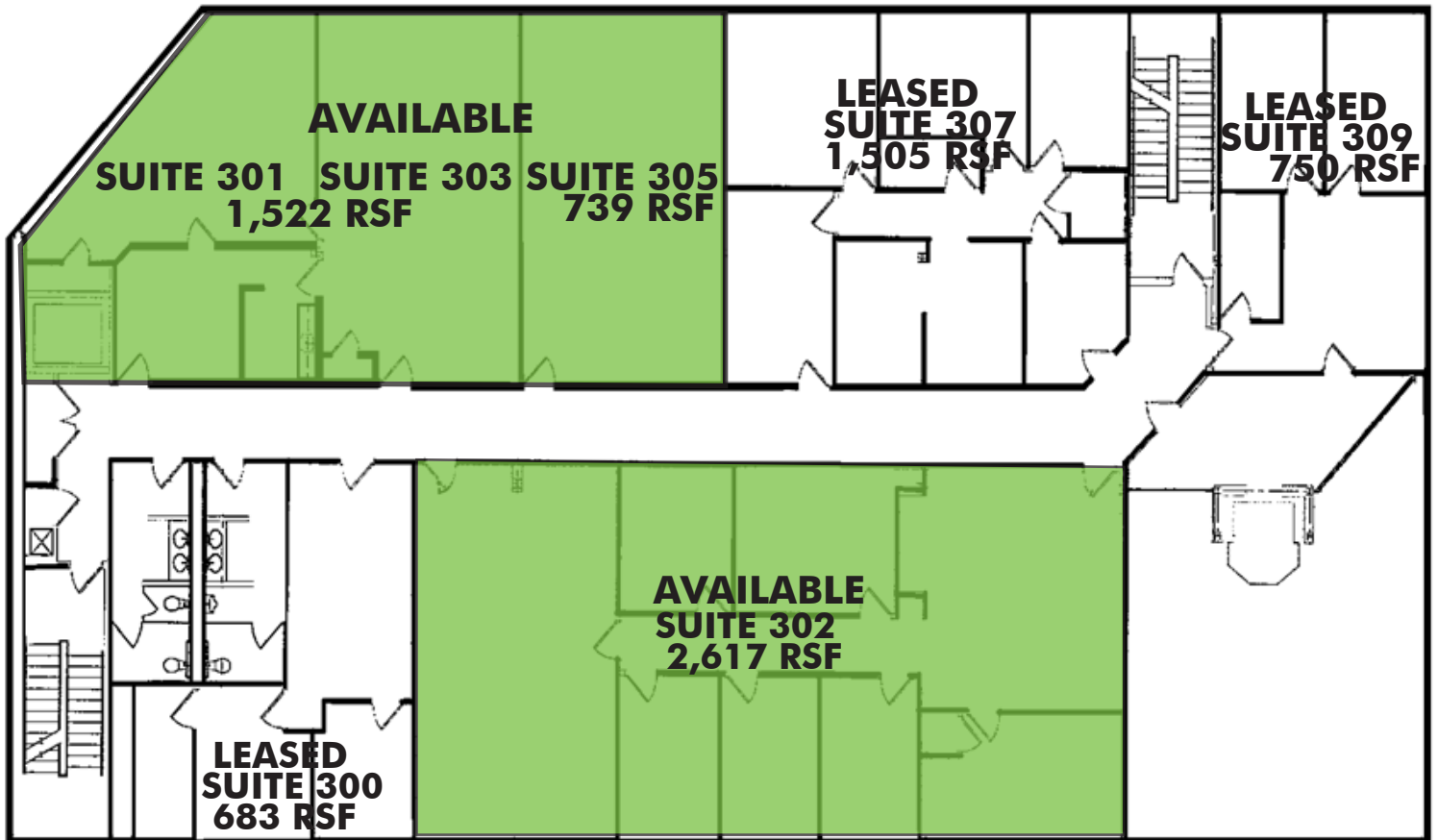
SECOND FLOOR PLAN



FOR LEASE
600 E. STATE, BELVIDERE, IL



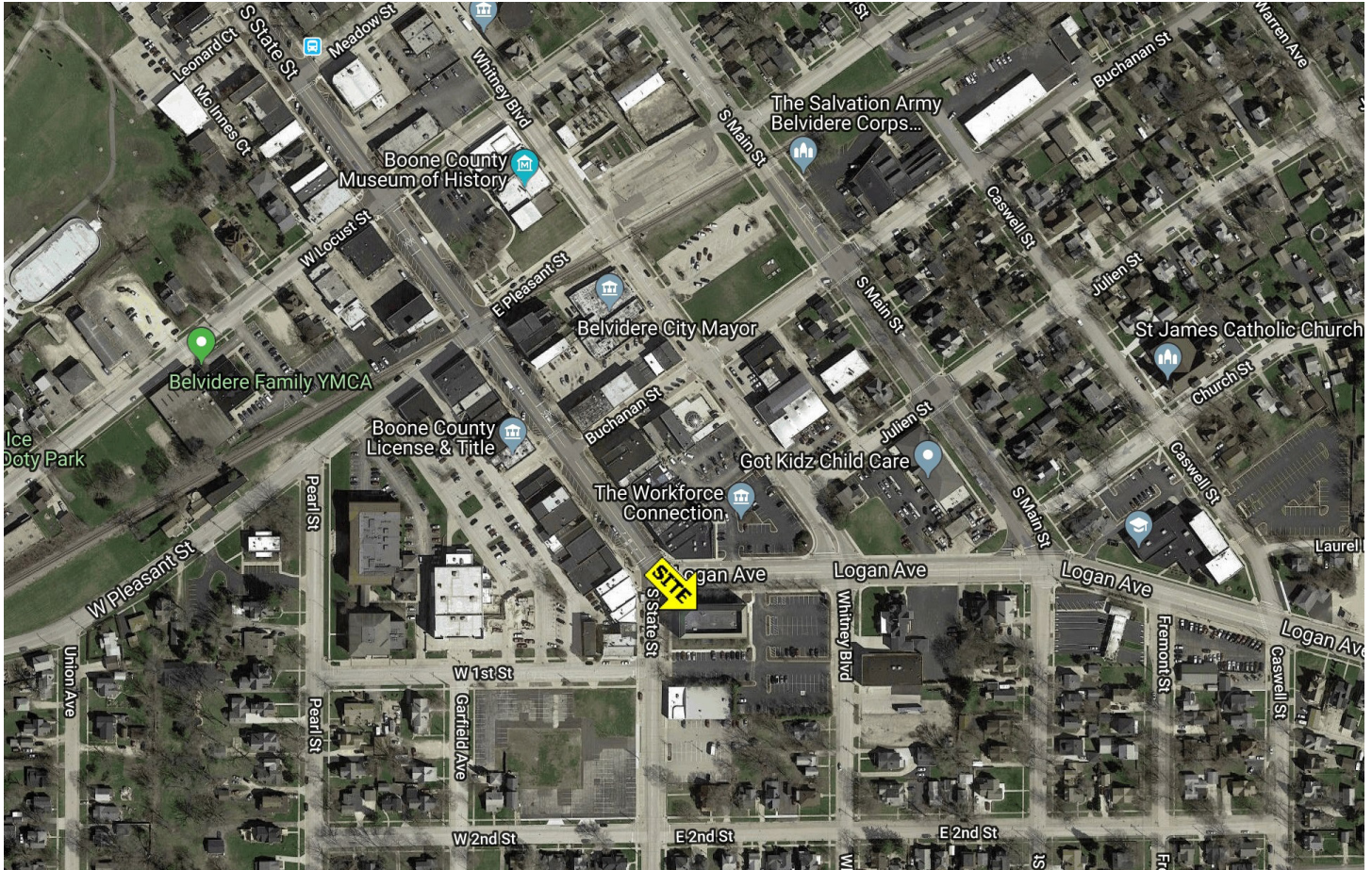
THIRD FLOOR PLAN



FOR LEASE 600 E. STATE, BELVIDERE, IL



IMMEDIATE AREA



CONTACT

KAREN WALSH

Senior Vice President

+1 815 218 3438

karen.walsh@cbre.com

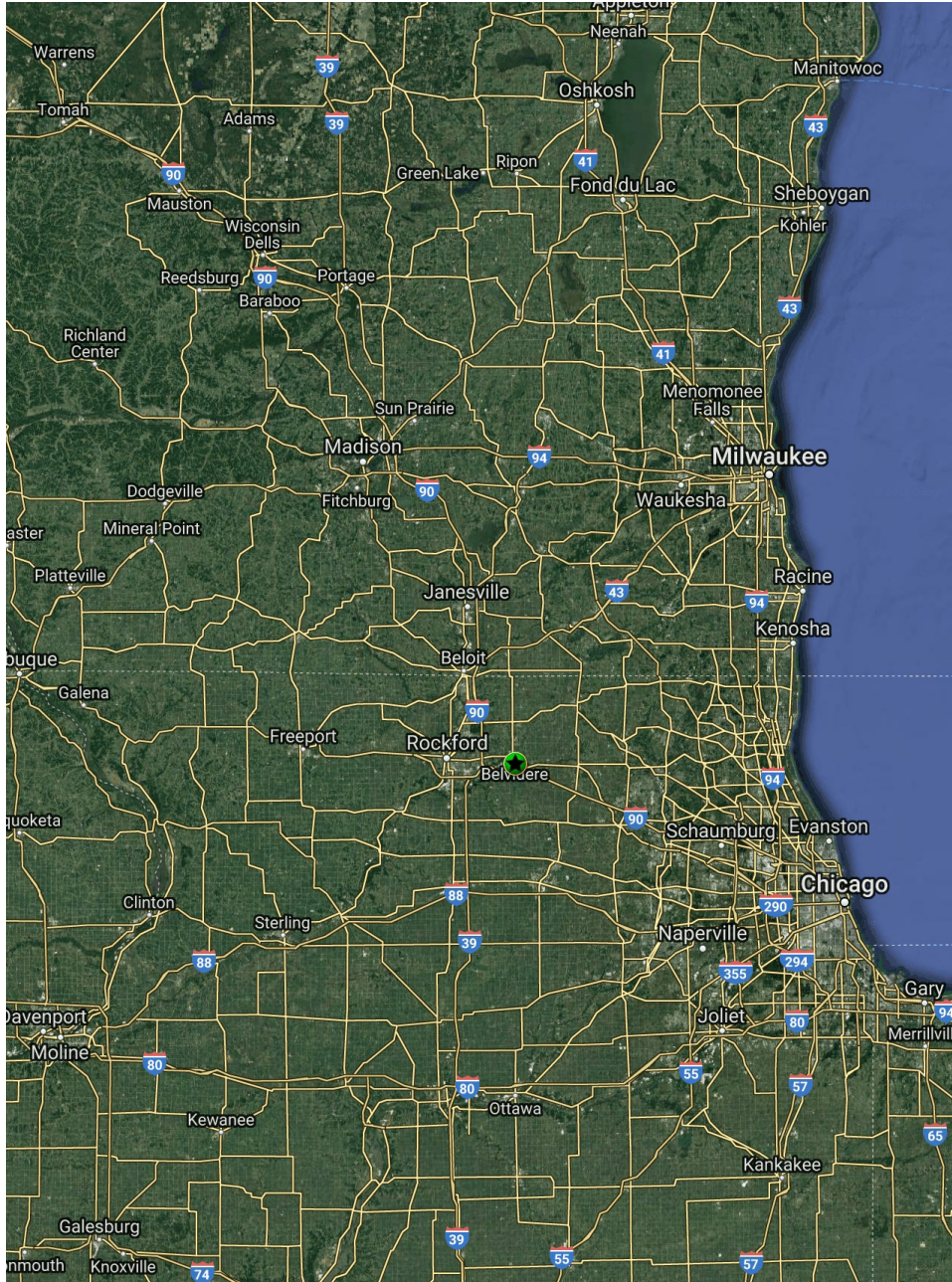
www.cbre.com/karen.walsh

CBRE

FOR LEASE 600 E. STATE, BELVIDERE, IL



AERIAL



© 2022 CBRE, Inc. The information contained in this document has been obtained from sources believed reliable. While CBRE, Inc. does not doubt its accuracy, CBRE, Inc. has not verified it and makes no guarantee, warranty or representation about it. It is your responsibility to independently confirm its accuracy and completeness. Any projections, opinions, assumptions or estimates used are for example only and do not represent the current or future performance of the property. The value of this transaction to you depends on tax and other factors which should be evaluated by your tax, financial and legal advisors. You and your advisors should conduct a careful, independent investigation of the property to determine to your satisfaction the suitability of the property for your needs. Photos herein are the property of their respective owners and use of these images without the express written consent of the owner is prohibited. CBRE and the CBRE logo are service marks of CBRE, Inc. and/or its affiliated or related companies in the United States and other countries. All other marks displayed on this document are the property of their respective owners.