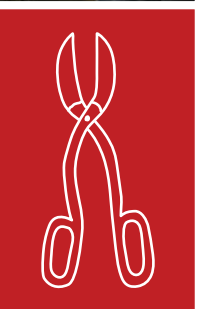
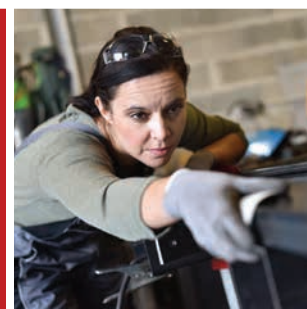
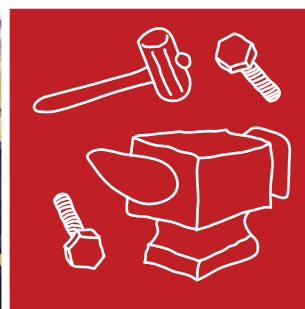




Project First Rate Presents



THE NORTHWESTERN ILLINOIS BUILDING & CONSTRUCTION TRADES APPRENTICESHIP GUIDE




**NORTHWESTERN ILLINOIS
BUILDING TRADES
UNIONS**
Value on Display. Every Day.

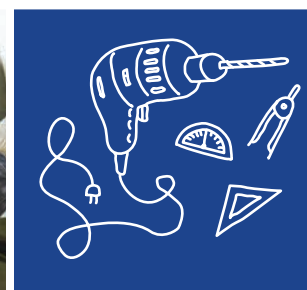




TABLE OF CONTENTS

4	Boilermakers
5	Bricklayers & Tile Trades
6	Carpenters, Cabinet Makers, & Floor Coverers
7	Electricians
8	Elevator Constructors
9	Heat & Frost Insulators
10	Ironworkers
11	Laborers
12	Millwrights
13	Operating Engineers
14	Painters & Glaziers
15	Plasterers & Cement Masons
16	Plumbing & Pipefitting, Heating, Ventilation, Air Conditioning, and Refrigeration
18	Roofers & Waterproofers
19	Sheet Metal Workers
20	Sprinkler Fitters
21	Teamsters
22	Basic Application Requirements for Construction Apprenticeships

Information accurate as of January 2018.

Please note that this guide contains stock images which may not depict accurate or safe jobsite practices.

Building and Construction Trades Apprenticeship Programs

The Building Trades' world-class apprenticeship and training infrastructure is the pride of the American labor movement, providing a great and comprehensive way for a worker to acquire the experience and instruction to establish a career without the burden of debt. Apprentices earn a living wage throughout the education process, with periodic raises to reflect increased experience and training.

Apprenticeship programs are a unique type of education, combining on-the-job training with traditional classroom instruction. These skills have historically been handed down from one skilled craftsman to the next, ensuring that integrity, a strong work ethic, and pride carry on from generation to generation. With the opportunity to learn from the construction industry's most highly trained instructors in a safe environment, apprentices graduate with a portable, recognized credential affording them good pay and benefits to support themselves and their families.

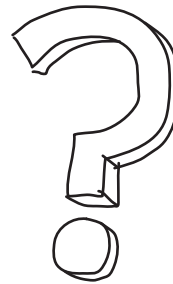
For more information about Building Trades apprenticeships, visit www.nwibt.org.

Apprenticeships and Equal Opportunity

Apprenticeships are privately funded through a partnership with trade unions and union contractors, and are overseen by the United States Department of Labor via the National Apprenticeship Program. The Office of Apprenticeship (OA) is responsible for providing service to existing apprenticeship programs and technical assistance to organizations who would like to establish an apprenticeship program. Applicants and apprentices are assured of proper selection and training by the regulations recognized by OA.

Apprenticeship programs will not discriminate against apprenticeship applicants or apprentices based on race, color, religion, national origin, sex (including pregnancy and gender identity), sexual orientation, genetic information, or because they are an individual with a disability or a person 40 years old or older. The programs will take affirmative action to provide equal opportunity in apprenticeship and will operate the apprenticeship program as required under Title 29 of the Code of Federal Regulations, part 30.

Apprenticeships provide equal employment opportunity: Women and minorities are encouraged to apply. To be selected, you must meet the qualifications of the particular trade and program to which you are applying and follow the registered selection process.



For questions about the National Apprenticeship Program, contact Ronda Kliman, Apprenticeship and Training Program Specialist, at kliman.ronda@dol.gov.





BOILERMAKERS



Boilermakers assemble, erect, and repair boilers and related equipment, attachments, and accessories. Work includes laying out, cutting, fitting, bolting, welding, and riveting heavy metal plates, boiler tubes, and castings. Working conditions include extreme heights and weather conditions, tight working areas, heavy lifting, climbing, and working in nuclear, fossil, gas, and oil power plants.

Boilermakers Local #1 represents members in Boone and Winnebago counties.

Apprenticeship Information: 4 years. Boilermaker's Local One Apprenticeship Program requires, at a minimum, the following every six months: completion of six written self-study lessons, on-the-job training modules and passing a written exam. To graduate to journeyman boilermaker status, you must complete a minimum 6000 hours of on the job training and you must attend, participate, and complete a minimum of 150 hours per year of classroom instruction.

Wages and Benefits: Start at 60% of Journeyman wage, with a 5% increase every six months if all required work is up-to-date. Pension, Annuity, and Health & Welfare benefits.

Boilermakers Local #60 represents members in Carroll, Jo Daviess, Lee, Ogle, Stephenson, and Whiteside counties.

Apprenticeship Information: 4 years, 6000 hours, including 144+ hours of classwork yearly. Eight sets of lessons (1 set every six months) and pass advancement tests. Must complete on-the-job training sheets and complete and submit monthly reports.

Wages and Benefits: Start at 70% of Journeyman wage, with 2.5% increase the first 4-6 month period and a 5% increase the second 4-6 month period if all required work is up-to-date. Benefits include Pension, Annuity, and Health & Welfare.

HOW TO APPLY

Applications accepted on third Thursday of every month from 8:00am to 10:00am at:

Boilermakers Local One
2941 S. Archer Avenue
Chicago, IL 60608

Please bring copies we can keep of the following documents:

- Copy of high school diploma or GED
- Copy of birth certificate
- Vocational school certifications
- Welding certifications

HOW TO APPLY

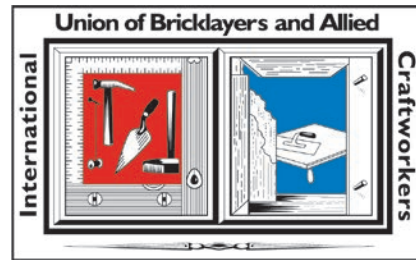
Applications accepted last Thursday of the month from 8:00am - 9:00am at the following location:

Boilermakers Local #60
425 West Edgewood Court
Morton, IL 61550
(309) 266-7144



BRICKLAYERS & TILE TRADES

Bricklayers lay and install block, granite, and various other clay, concrete, natural materials, brick, stone, structural tile, and marble; erect precast concrete and stone panels and any other masonry materials to build or repair walls, partitions, fireplaces, sewers, and other structures; also install firebrick linings in industrial furnaces. Working conditions are often outside in all types of weather.



Bricklayers and Allied Craft Workers Local #6 represents members in Boone, Carroll, Jo Daviess, Lee, Ogle, Stephenson, Whiteside, and Winnebago counties.

Apprenticeship Information: 3 ½ years.

Wages and Benefits: Start at 50% of Journeyman wage with a 5% increase every six months, with a 10% increase the final six months.

HOW TO APPLY

Applications accepted Wednesdays only from 9:00am - 12:00pm and 1:00pm - 4:00pm at the union office. An interview may be required. All apprenticeships are based on contractor need.

Bricklayer Joint Apprenticeship Committee
661 Southrock Drive
Rockford, IL 61102
(815) 963-5336



BRICKLAYERS & TILE TRADES





CARPENTERS, CABINET MAKERS, & FLOOR COVERERS



Carpenters work on most phases of construction: building, remodeling, and repairing structures of materials such as metals, plastics, mineral compounds, and man-made composites. Specialties include general carpentry, concrete forming, drywall, floor covering, insulation, lathing, cabinet milling, pile driving, shingling, and siding. Working conditions may include all types of weather, heights, and excavations.

Carpenters Local #790 represents members in Stephenson, Carroll, Whiteside, Jo Daviess, Dekalb, and Lee counties and part of Ogle County. **Carpenters Local #792** represents members in Winnebago and Boone counties and part of Ogle County.

Apprenticeship Information: Most apprenticeships last four and a half years. Apprentices attend one week of training quarterly.

Wages and Benefits: Exact rate of pay depends on the type of carpentry program. Standard rate for an apprentice is:

- 1st Year at 40% to 50% of journeyman wages
- 2nd Year at 60% to 70% of journeyman wages
- 3rd Year at 80% of journeyman wages
- 4th Year at 90% of journeyman wages

Health & Welfare benefits included as well as pension accrued during on-the-job training.

HOW TO APPLY

Applicants can obtain a recommendation from one of the following:

- **Union Contractors:** The applicant must obtain a letter of recommendation from the contractor stating that the company intends to employ the applicant upon becoming an apprentice.
- **Local Union:** A letter of recommendation must be obtained by the applicant from a local union affiliated with the Chicago Regional Council of Carpenters' Apprentice and Training Program.

Qualifying applicants must appear in person at the Apprentice Training Center to complete and file an application. At that time the applicant must meet the minimum qualifications. To apply, contact:

Rockford Apprentice and Training Center
1117 Tebala Blvd.
Rockford, IL 61108-4562
815-332-7006

Applications accepted Thursdays from 9:00 am to 3:00 pm. \$25 application fee.



ELECTRICIANS

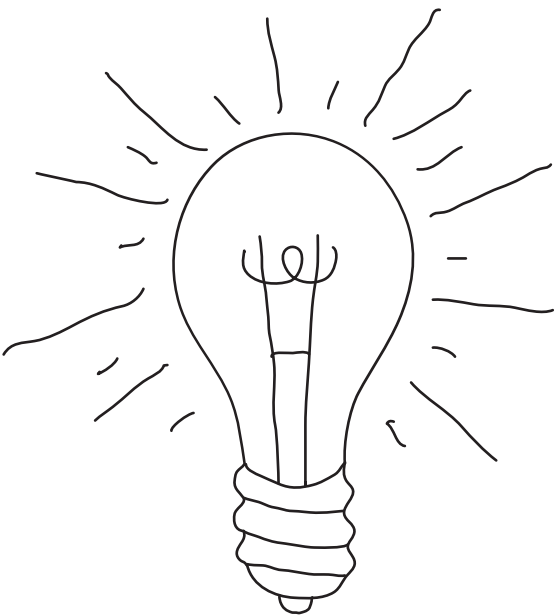
Electricians assemble, install, maintain, repair, and test electrical equipment, power distribution, and wiring systems in residential, commercial, and industrial settings. In addition, they work with high voltage, data voice systems, telephone communications, fiber optics, and temperature and motor controls. They also install receptacles, light fixtures, fire alarms, traffic signals, outdoor lighting, process controls, power generators, and security systems.



International Brotherhood of Electrical Workers (IBEW) Local #364 represents members in Boone, Carroll, Jo Daviess, Lee, Ogle, Stephenson, Whiteside, and Winnebago counties.

Apprenticeship Information: 5-year apprenticeship; 900 hours of classroom training and 8000 hours of on-the-job training.

Wages and Benefits: Apprentices start at 40% of journeyman wireman wage.



HOW TO APPLY

Applications are accepted on the first Tuesday of each month between 8:30 am and 6:30 pm at:

Northern Illinois Electrical Apprenticeship
& Training Center
619 Southrock Drive
Rockford, IL 61102
(815) 969-8484
Training@JATC364.net

At the time of application, only those who have resided for a minimum of one year within the geographical boundaries, as defined in the current Labor Agreement, will be considered for an interview. A valid Illinois Driver's License, Illinois Identification card or valid Voters Registration Card will be required as proof.

In order to proceed to aptitude test, applicants must provide the following within 30 days of application:

- Copy of birth certificate
- Copy of high school transcripts (must be sent directly from the education institution to the Apprenticeship Office)
- Proof of completing at least one full year of high school algebra with a minimum passing grade of "C" or better. Pre-Algebra is unacceptable.
- \$25.00 administration fee

Visit www.ibew364.org/Training for more details.





ELEVATOR CONSTRUCTORS



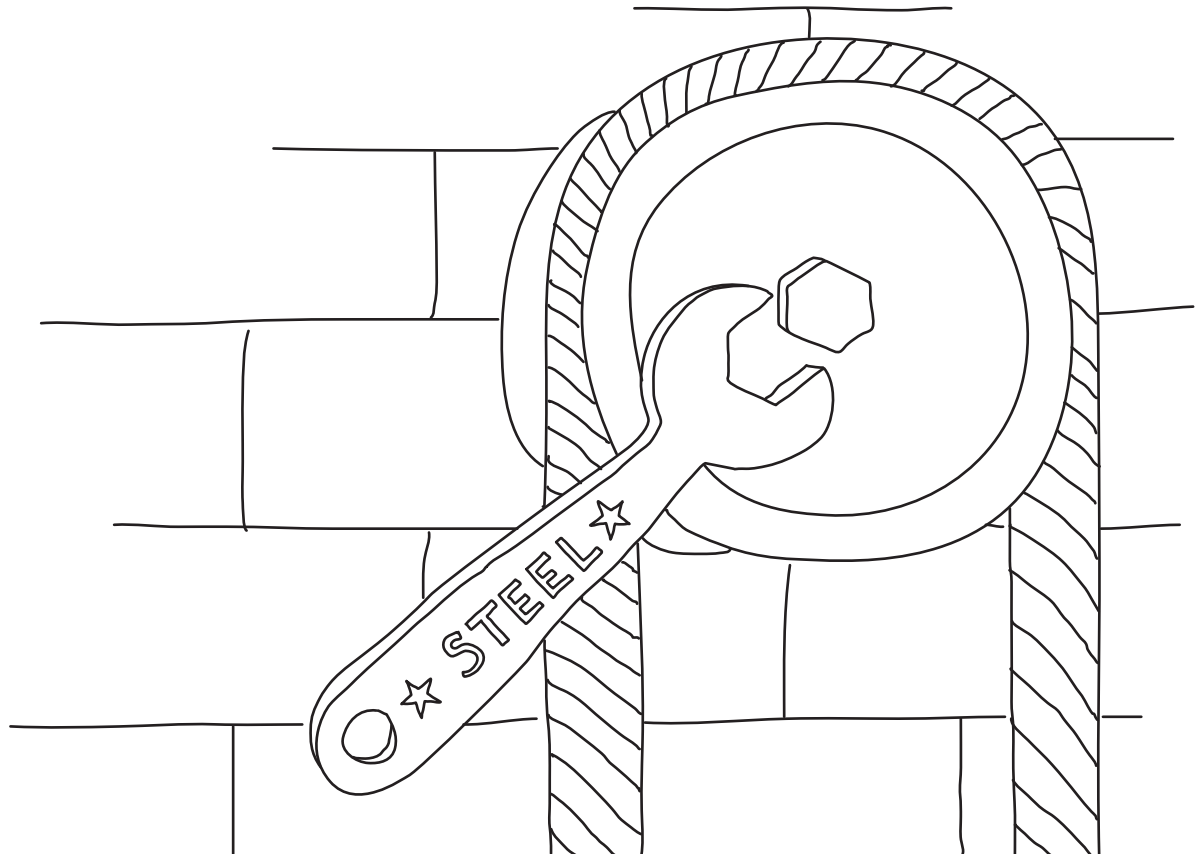
Elevator Constructors assemble, install and replace elevators, escalators, dumbwaiters, moving walkways, platform lifts, stairway chair lifts, material lifts, and automatic transfer devices and similar equipment in new and old buildings. Working conditions involve heights, exposed electrical contact, and moving sheaves and cables.

Apprenticeship Information: Four-year program with a minimum of 144 classroom and 1700 on-the-job training hours per year.

Wages and Benefits: Apprentices start at approximately \$24 per hour with annual increases to Journeyworker wage. Health & Welfare, Pension & Annuity.

HOW TO APPLY

Elevator Constructors Local #132
 1602 S. Park Street #115
 Madison, WI 53715
 (608) 630-9288





HEAT & FROST INSULATORS

Heat & Frost Insulators work with commercial and industrial insulation. They install insulation and soundproofing for heating, ventilation, steam generation, process piping, plumbing systems; remove hazardous waste; and clean duct systems.



Heat & Frost Insulators Local #19 represents members in Southern Wisconsin and parts of Northern Illinois, including Stephenson, Winnebago, Boone, & Ogle counties. The Southern Wisconsin Heat & Frost Joint Apprenticeship Committee (JAC) oversees apprenticeship training.

Apprenticeship Information: 4 years of classroom learning, hands-on training, and on-the-job training. Apprentices are placed with contractors as needed.

Wages and Benefits: The current rate of pay is 50% of Journeyman wage. Pension, Annuity and Health insurance are also part of the apprentice package on top of the hourly wage.

HOW TO APPLY

Applications are accepted year round. Letters to test are mailed in January and July only. Qualified applicants will receive a letter to test for Accuplacer (consisting of reading comprehension, sentence and grammar skills, and arithmetic), normally at MATC in Milwaukee or Madison. After passing the Accuplacer tests you will be mailed a "Letter of Introduction" along with a list of our training contractors that you may then contact. Apprentices will also be put on a list for the reference of Local 19's Member Contractors.

Once all apprentices in the program are working we will accept new applicants. We cannot predict when we can accept new applicants. Demand fluctuates with market conditions affecting employment opportunities. Visit www.insulators19.com/apprentice-program for an application, or contact:

Local 19 Education Dept.
N27 W23155 Roundy Dr.
Pewaukee, WI 53072
(414) 305-3063
local19jac@yahoo.com



HEAT & FROST INSULATORS





IRONWORKERS



Ironworkers perform structural, ornamental, and reinforcing work, including erecting structural steel bridges, buildings, viaducts, tunnels, and roof decks. They also perform machinery moving and rigging; apply sheeting to structural steel frames; and install metal stairways, catwalks, floor grates, iron ladders, gates, chain-link fences, ornamental grilles, screens, and decorative ironwork fences and balconies.

Ironworkers Local #498 represents members in 13 counties throughout Northern Illinois and Southern Wisconsin.

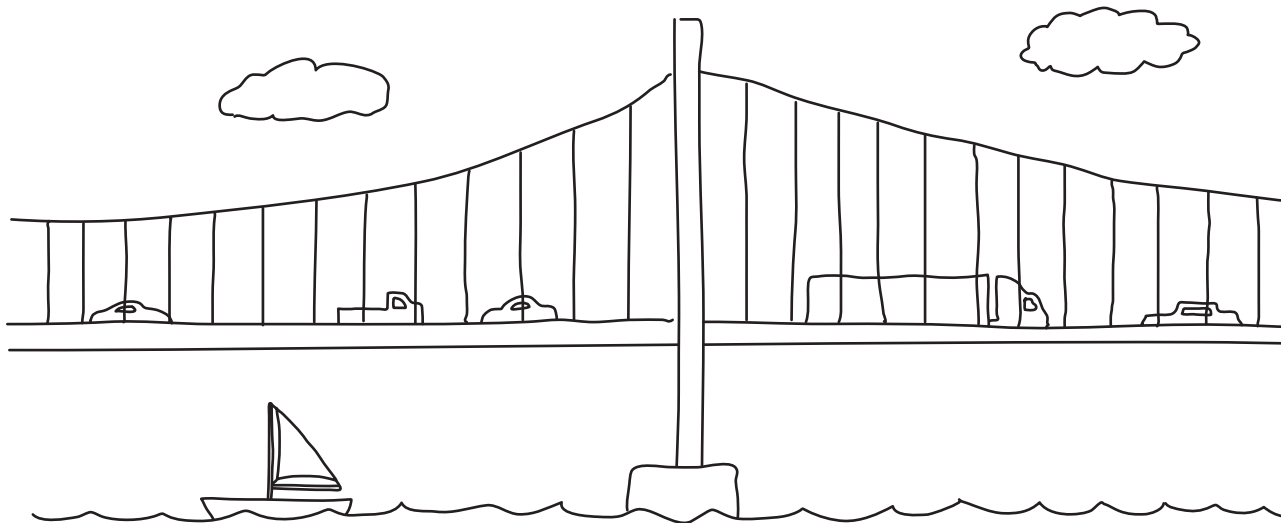
Apprenticeship Information: 4 years of classroom learning plus hands-on training, with 7200 hours of on-the-job training with skilled Ironworkers.

Wages and Benefits: The current rate of pay is 50% of Journeyman wage with step increases based on work experience. Pension, Annuity and Health insurance are also part of the apprentice package on top of the hourly wage.

HOW TO APPLY

Applications are accepted based on anticipated work needs. Advertisements will be placed in local papers and employment agencies 30 days prior to accepting applications. Aptitude test and interview required. Visit www.iwlocal498.org/apprentices.html for updated application information, or contact the union office:

Ironworkers Local #498
5640 Sockness Drive
Rockford, IL 61109





LABORERS

Laborers help erect, repair, and wreck buildings and bridges; deepen and improve waterways; install waterworks, locks, and dams; grade and maintain railroad right-of-ways; lay ties and rails; spread and level dirt, gravel, and other materials; and join, wrap, and seal sections of tile.



Laborers Local #32 and **Laborers Local #727** represent members in Carroll, DeKalb, Jo Daviess, Lee, Ogle, Stephenson, Whiteside, and Winnebago counties.

Apprenticeship Information: 3 years (3000 hours). Apprentices must complete 40 hours of safety training before being sent to any job.

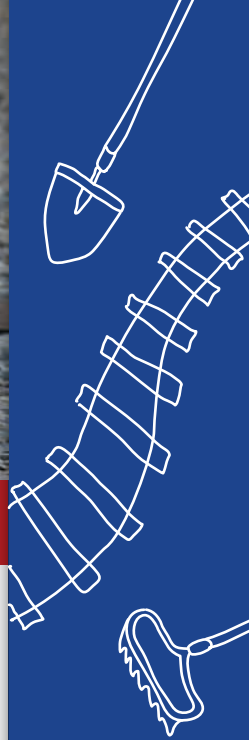
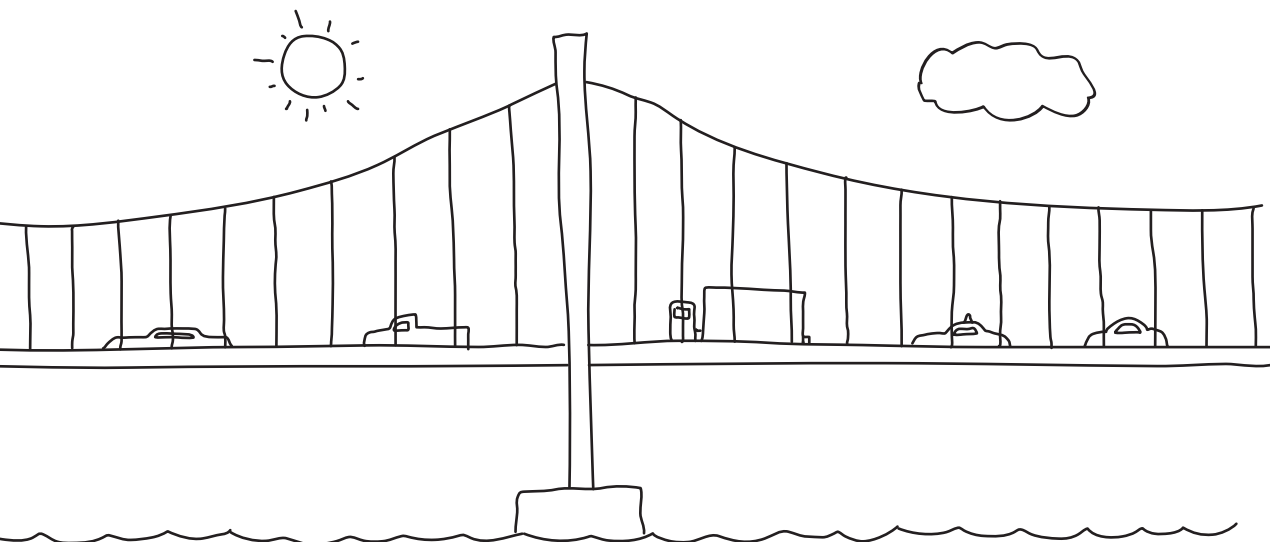
Wages and Benefits:

- 1st Year at 75% of Journeyworker rate plus Benefits
- 2nd Year at 85% of Journeyworker rate plus Benefits
- 3rd Year at 95% of Journeyworker rate plus Benefits

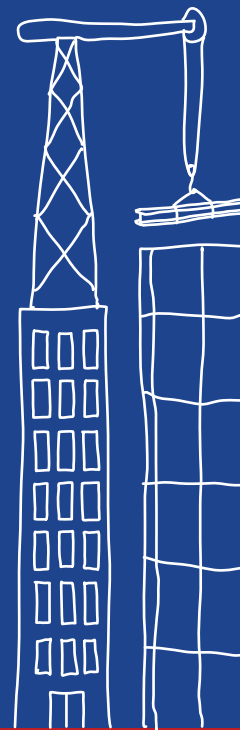
Pension, Annuity, and Health & Welfare benefits.

HOW TO APPLY

Applications are accepted on the 1st Tuesday of each month in your local union office from 10:00am to 12:00pm. Application period is typically open from April to September. Visit www.illaborers.org/apprenticeship/where-to-apply.html for information on where to apply.



LABORERS





MILLWRIGHTS



Millwrights specialize in the assembly, erection, installation, and maintenance of all types of industrial equipment and machinery according to layout plans, blueprints, and other schematic drawings. Millwrights are skilled in using a variety of hand and power tools, welding and brazing all types of metal, optic tooling, precision measuring tools, hoists, and cranes.

Apprenticeship Information: Four-year program consists of on-the-job training along with supplemental classroom instruction in course work established by the United Brotherhood of Carpenters and Joiners of America for a minimum of 200 hours per year. In addition, apprentices must attend all scheduled safety training.

Wages and Benefits:

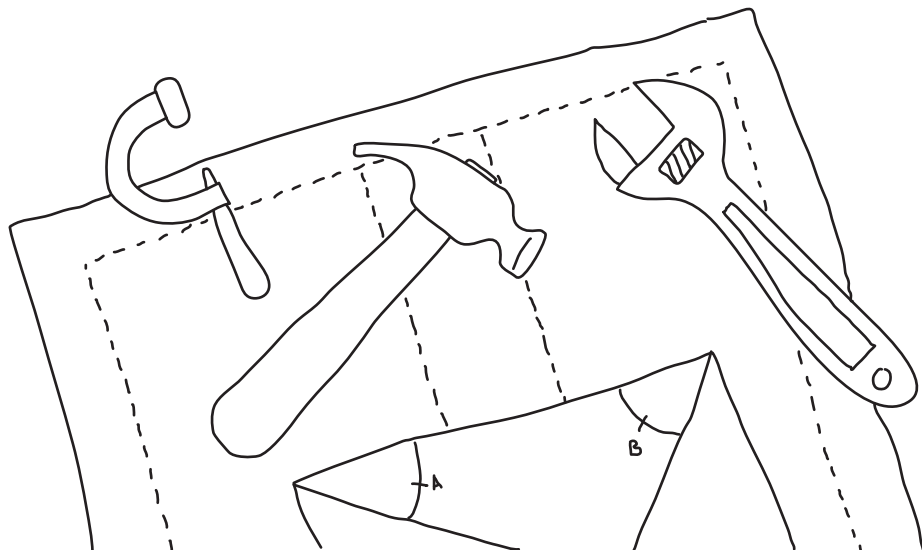
- 1st year at 60% of Journeymen Wage
- 2nd year at 70% of Journeymen Wage
- 3rd year at 80% of Journeymen Wage
- 4th year at 90% of Journeymen Wage

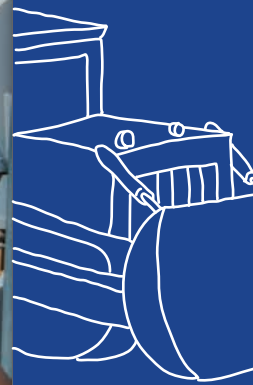
Millwrights provide Health & Welfare and Pension benefits.

HOW TO APPLY

All prospective applicants must attend an orientation. Sessions are held on the first Tuesday of every month at 9:00am, except in January. Applications are distributed at orientation. Applicants must provide copies of birth certificate and high school diploma or GED. A math skills test and interviews will be required. For more information, contact the training center at:

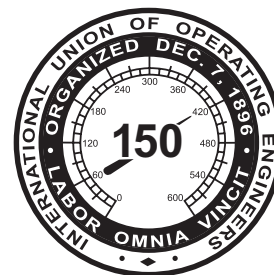
Millwright and Technical Engineers Local 2158
IL-Iowa Millwrights JATC
2707 62nd St Ct
Bettendorf, IA 52722
(563) 332-3595





OPERATING ENGINEERS

Operating engineers cover a variety of job classifications in industries such as highway construction, building construction, mining, logging, and utility works, such as water and sewer excavation. Cranes, bulldozers, front end loaders, rollers, backhoes, graders, dredgers, hoists, drills, pumps and compressors are just some of the equipment utilized by operating engineers. In most cases, if it can push, pull, pump, or lift material, rolls on tires or crawls on tracks like a tank, it falls under the jurisdiction of the International Union of Operating Engineers.



Apprenticeship Information: Apprentices are taught the proper use, care, and safe handling of the equipment used in connection with their work and, of course, the important skills necessary to become a successful Operator. While working on-the-job and acquiring skills, apprentices are a regular part of the work force on whom contractors and co-workers rely. Apprentices are also required to attend classes and complete the prescribed courses related to the trade in order to complement their on-the-job training. If the on-the-job or school work is not satisfactory, they may be dropped from the program or sent back to repeat that segment of training.

Wages and Benefits:

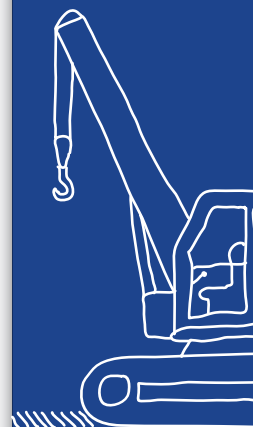
- 1st Year at 55% of Journeyworker rate plus Benefits
- 2nd Year at 65% of Journeyworker rate plus Benefits
- First half of 3rd Year at 75% of Journeyworker rate plus Benefits
- Second half of 3rd Year at 80% of Journeyworker rate plus Benefits
- First half of 4th Year at 85% of Journeyworker rate plus Benefits
- Second half of 4th Year at 90% of Journeyworker rate plus + Benefits

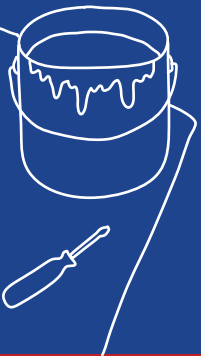
HOW TO APPLY

Apply in person at the District office:

Operating Engineers Local 150
4477 Linden Rd.
Rockford, IL 61109
(815) 874-4166

Visit www.asiplocal150.org for more information and dates to apply. Applicants **MUST** possess a valid driver's license that matches the address listed on the application. No other forms of identification will be accepted. A statement from a licensed physician stating physical ability to perform the work of the trades will be required 30 days after being indentured into the program. Applicants **MUST** be able to read, write, and speak the English language.





PAINTERS & GLAZIERS



Painters, Finishers, and Decorators apply coats of paint, varnish, stains, enamels, and lacquers to protect interior and exterior surfaces, trims, and structures. They also prepare and cover interior walls and ceilings with finishes such as fabric, wallpaper, vinyl, and other materials. Drywall finishers perform taping, surfacing, and finishing of all drywall materials. Glaziers install metal framing, glass reflective panels, door glass, mirror glass, and plexiglass in residential, commercial, and industrial buildings. Working conditions may be indoors and outdoors, on ladders and scaffolds, and in confined spaces. Must be able to lift and carry at least 80 pounds.

Painters and drywall finishers are represented by Painters District Council #30 in Boone, Jo Daviess, Lee, Ogle, Stephenson, and Winnebago counties. Glaziers are represented in Boone, Dekalb, Lee, Ogle, Stephenson, and Winnebago counties as well as Rock, Green and Walworth counties in Wisconsin.

Apprenticeship Information: Four different trades offered through the apprenticeship program (commercial painting-decorating, industrial painting, glazing, and drywall finishing), all of which are three-year programs. Every student is required to participate in and complete the three-year program, which consists of 160 hours of technical classroom instruction per year. Additionally, students must also work over 4,650 hours for their employer over those three years, which equates to about 30 hours per week.

Wages and Benefits: Health & Welfare, Pension

HOW TO APPLY

IUPAT Local 607
5640 Sockness Drive
Rockford, IL 61109
(815) 388-2869
johnp@paintersdc30.com



PLASTERERS & CEMENT MASONS

Plasterers and Cement Masons place and finish concrete surfaces, including floors, walls, and ceilings; apply coatings to concrete; patch and repair concrete; and frame sidewalks, driveways, and stairways. Additionally, they install insulated finish systems, apply stucco to exterior walls, and soundproof buildings. Working conditions may be inside or outside in all types of weather. Must have patience and endurance.



Plasterers & Cement Masons Local #11 represents members in Boone, Carroll, Jo Daviess, Lee, Ogle, Stephenson, Whiteside, and Winnebago counties.

Apprenticeship Information: 3 years (4000 hours)

Wages and Benefits:

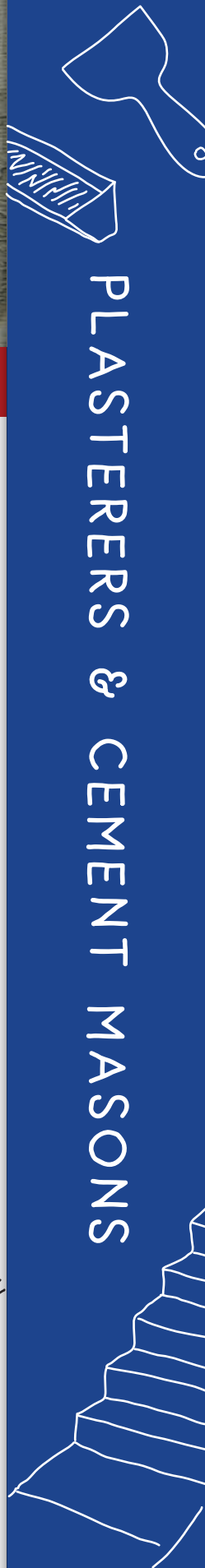
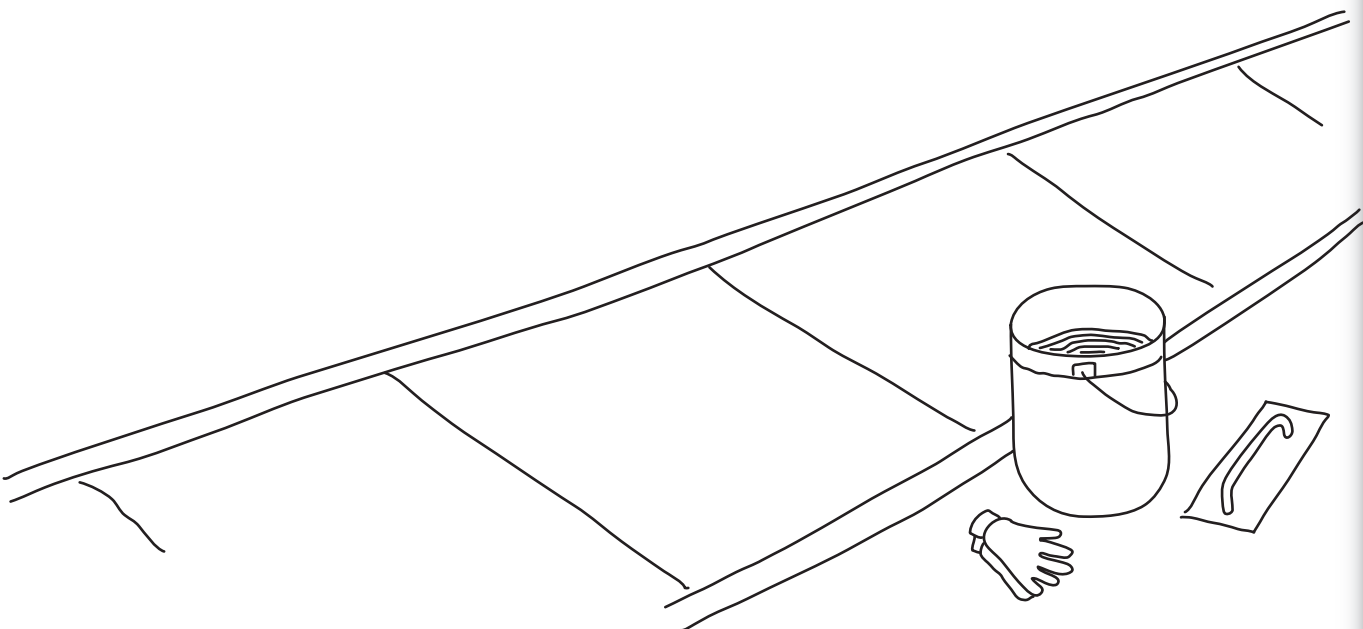
- 70% of Journeyman wage 1st year
- 80% of Journeyman wage 2nd year
- 90% of Journeyman wage 3rd year

Pension, Annuity, and Health & Welfare benefits.

HOW TO APPLY

Applications are accepted all year every business day. Obtain an informational packet at www.opcmia11jadc.com or contact Apprenticeship Coordinator Alonzo Schumann at trainer11jadc@gmail.com.

Local 11 Apprenticeship Program
1102 Rail Drive
Woodstock, IL 60098
(815) 527-7489



PLASTERERS & CEMENT MASONS



PLUMBING & PIPEFITTING, HEATING, VENTILATION, AIR CONDITIONING, AND REFRIGERATION



Plumbers install, repair, maintain and service piping and plumbing systems and equipment used for drinking (potable) water distribution, sanitary storm water systems, and waste disposal. Pipefitter is a tradesperson with the knowledge and ability to layout, fabricate, assemble, install, maintain, and repair piping systems that transport all types of fluids, slurries, and gas in the residential, commercial, and industrial sectors. Welding is a big part of the pipefitting industry. HVACR Fitter work covers the general responsibilities for heating, ventilation, air conditioning, and refrigeration (HVACR). This would include the installation and maintenance of all sizes of heating and cooling systems for residential, commercial, and institutional applications.

Plumbers & Pipefitters Local #23 represents members in Boone, Jo Daviess, Ogle, Stephenson, and Winnebago counties and portions of Carroll County.

Apprenticeship Information: 5 years

Wages and Benefits:

- 1st year at 40% of Journeymen wage
- 2nd year at 50% of Journeymen wage
- 3rd year at 60% of Journeymen wage
- 4th year at 70% of Journeymen wage
- 5th year at 80% of Journeymen wage

Benefits: Health & Welfare, Pension, HRA, and 401k

HOW TO APPLY

Visit www.ualocal23.org for application information. On the day of application, must provide:

- Cashier's Check or Money Order payable to JATC for \$20.00 (non-refundable application fee)
- Valid/current driver's license or State issued ID card
- Transcripts in unopened officially sealed school envelope or GED results. No transcripts will be accepted prior to submission of application.

Personal Experience Forms will be distributed at time of application. Aptitude test required. Those applicants earning above minimum cut score on the test will be scheduled for an interview.

UA Local 23 Training Center
4525 Boeing Dr.
Rockford, IL 61109
(815) 397-0342



PLUMBING & PIPEFITTING, HEATING, VENTILATION, AIR CONDITIONING, AND REFRIGERATION

Plumbers & Pipefitters Local #25 represents members in Lee and Whiteside counties and part of Carroll County.

Apprenticeship Information: As an apprentice you will work for a contractor 40+ hours per week and attend day classes related to your trade six weeks per year with an occasional Saturday class.

Five-year apprenticeship includes:

- 8,500 hours of on-the-job training
- 1,300 hours of classroom training
- Earning while you learn

Wages and Benefits:

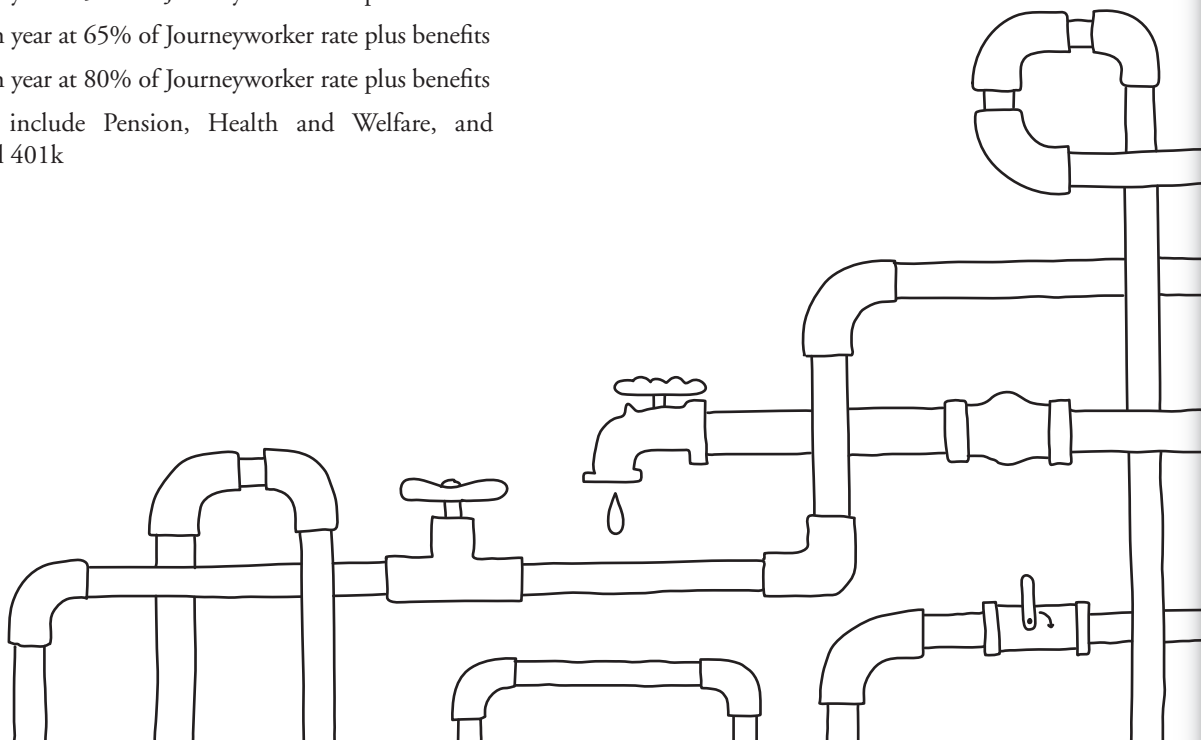
- 1st year at 40% of Journeyworker rate plus benefits
- 2nd year at 45% of Journeyworker rate plus benefits
- 3rd year at 50% of Journeyworker rate plus benefits
- 4th year at 65% of Journeyworker rate plus benefits
- 5th year at 80% of Journeyworker rate plus benefits

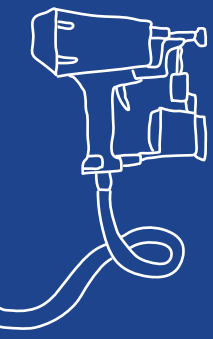
Benefits include Pension, Health and Welfare, and Optional 401k

HOW TO APPLY

Apply online to the Rock Island office at www.lu25.org/application.html. Application will not be considered complete until applicant provides driver's license or photo ID, birth certificate, high school diploma and transcripts or an approved high school equivalency GED certificate or scores, military transfer or discharge forms DD-214 or equivalent (if applicable), and administrative fee. For more information, contact:

Local Union 25
4612 46th Avenue
Rock Island, Illinois 61201
(309) 788-4159





ROOFERS & WATERPROOFERS



Roofers & Waterproofers use a wide range of products and application techniques for hot asphalt, hot coal tar pitch, rubber, thermoplastic systems, torch-applied modified bitumen, and cold-applied systems. In addition, they install insulation, gravel, slate, cement and clay tile, and shingles. Waterproofers apply materials to plaza decks and building foundations to keep moisture out.

Apprenticeship Information: 5 years/5500 hours of classroom leaning and on-the-job training

Wages and Benefits: See www.chicagoroofters.com/payrates.html for current rates.

HOW TO APPLY

Apply in person at our office, Monday through Friday, from 7:00am to 2:00pm. Must provide the following with application:

- \$20.00 non-refundable application fee in the form of cash or money order
- Original high-school diploma or G.E.D. certificate (proof of 6 month's commercial roofing experience may take place of diploma)
- Valid driver's license and social security card

Aptitude test required. Must be able to speak and understand the English language (classes are in English.) Applicant will be notified by mail of his/her scheduled testing date. Once you have successfully completed the placement test, you will be contacted for a position based on your score ranking test and when a position becomes available.

www.chicagoroofters.com

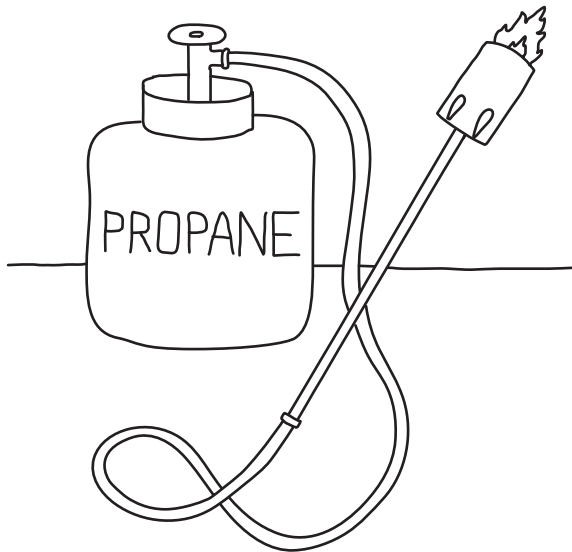
Chicago Roofers Joint Apprenticeship & Training Program

7045 Joliet Road

Indian Head Park, Illinois 60525

Office: (708)246-4488

Fax: (708)246-5908





SHEET METAL WORKERS

Sheet Metal Workers fabricate and install heating, air conditioning, and ventilation. They also work in industrial plants, install architectural sheet metal, and perform specialty fabrication.



Apprenticeship Information: 5-year program with 9,750 on-the-job training and 208 classroom hours per year.

Wages and Benefits: Apprentice base wage and local and national pension contributions are based on the following percentages of Building Trades journeyman rates:

- First year: first half 40%, second half 45%
- Second year: first half 50%, second half 55%
- Third year: first half 60%, second half 65%
- Forth year: first half 70%, second half 75%
- Fifth year: first half 80%, second half 85%

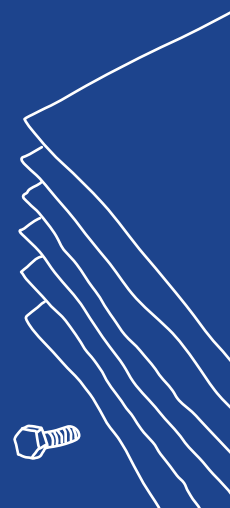
HOW TO APPLY

Applications accepted year round, however we only test twice a year for the program (typically in March and October). **MUST FURNISH** on the day of application your high school transcripts and GED test scores (if applicable), a copy of your birth certificate, and a \$25.00 nonrefundable administration fee. Visit www.smwlocal219.com for an application, or contact:

Sheet Metal Workers Local 219
3316 Publishers Drive
Rockford IL 61109
815.874.6641
smart219@smwlocal219.org



SHEET METAL WORKERS





SPRINKLER FITTERS



Sprinkler Fitters install, repair, and maintain all types of fixed piping and automatic fire protection systems. Sprinkler Fitters must lift heavy pipes, stand for long periods of time and sometimes work in uncomfortable or cramped positions. They need physical strength as well as stamina. They also may have to work outdoors in inclement weather, and work at high levels from scaffolds, ladders, and aerial platforms.

Sprinkler Fitters Local #669 represents members in Boone, Carroll, Jo Daviess, Lee, Ogle, Stephenson, Whiteside, and Winnebago counties.

Apprenticeship Information: 5-year program with 10,000 hours on the job training and no less than 144 classroom hours per year, along with online distance education.

Wages and Benefits: Apprentice base wage and health/welfare contributions are based on the following percentages of Building Trades journeyman rates:

Class 1-10 with wage increased every six months

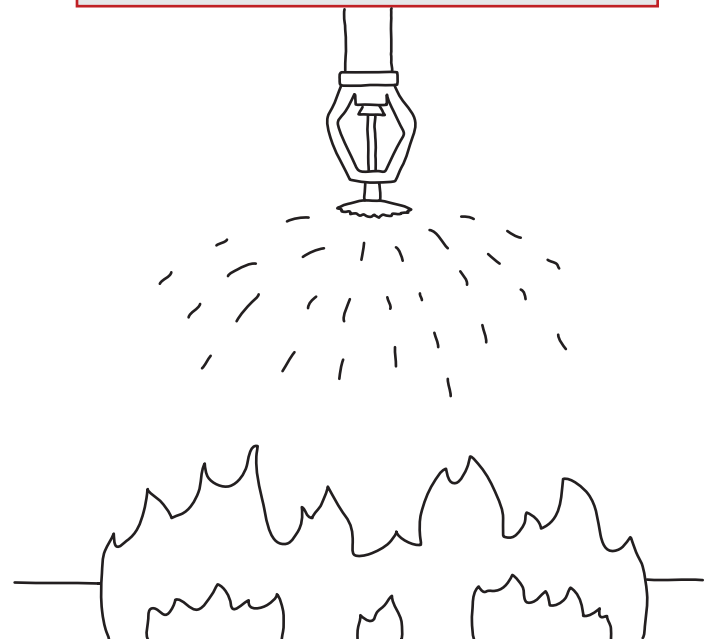
- Class 1 45% of journeyman rate
- Class 2 50% of journeyman rate
- Class 3 55% of journeyman rate
- Class 4 60% of journeyman rate
- Class 5 65% of journeyman rate

Up to class 10.

HOW TO APPLY

Applications will be accepted five days per week, except holidays, 52 weeks per year between the hours of 9:00am - 11:30am and 1:30pm - 3:00pm at the contractor/employer's address. Employer's addresses can be found at www.sprinklerfitters669.org.

UA Sprinkler Fitters Local 669
Joint Apprenticeship and Training Committee
7050 Oakland Mills Road Suite #100
Columbia Maryland 21046
(410) 312-5202





TEAMSTERS

Teamsters transport asphalt, concrete, and dirt for new roads and rebuilding of existing roads. Teamsters work with all types of equipment and in all types of weather, traffic, and hazardous conditions.



Teamsters Local #722 represents members in Jo Daviess, Carroll, Ogle, Whiteside, and Lee counties. **Teamsters Local #325** represents members in Stephenson, Winnebago, and Boone counties.

Apprenticeship Information: 4 years with classroom instruction and on-the-job training

Wages and Benefits:

An Apprentice earns a percentage of the Journeyman's Wage:

- First Year: 60%
- Second Year: 70%
- Third Year: 80%
- Fourth Year: 90%

Teamster Unions provide medical, insurance, and retirement benefits.

HOW TO APPLY

Applicants must have a clean/clear driving record for one year prior to submitting application and must also pass a DOT physical. At the time of application, the Applicant must furnish copies of the following:

- Birth Certificate
- High School diploma or GED or official high school transcripts
- Illinois Class "D" driver's license
- Illinois State Motor Vehicle Report – not older than 30 days of application date

A \$25.00 non-refundable application fee is required at the time of application. Only cash or money orders will be accepted. Visit www.illinoisteamsterstraining.org for more information, or contact:

Illinois Teamsters/Employers Apprenticeship and Training Fund Facility
990 NE Frontage Road, Suite 4
Joliet, IL 60431



TEAMSTERS



Sponsored By:



FINISHING CONTRACTORS
ASSOCIATION OF ILLINOIS



BROUGHT
TO YOU BY



Project First Rate
111 S Madison St
Rockford, Illinois 61104