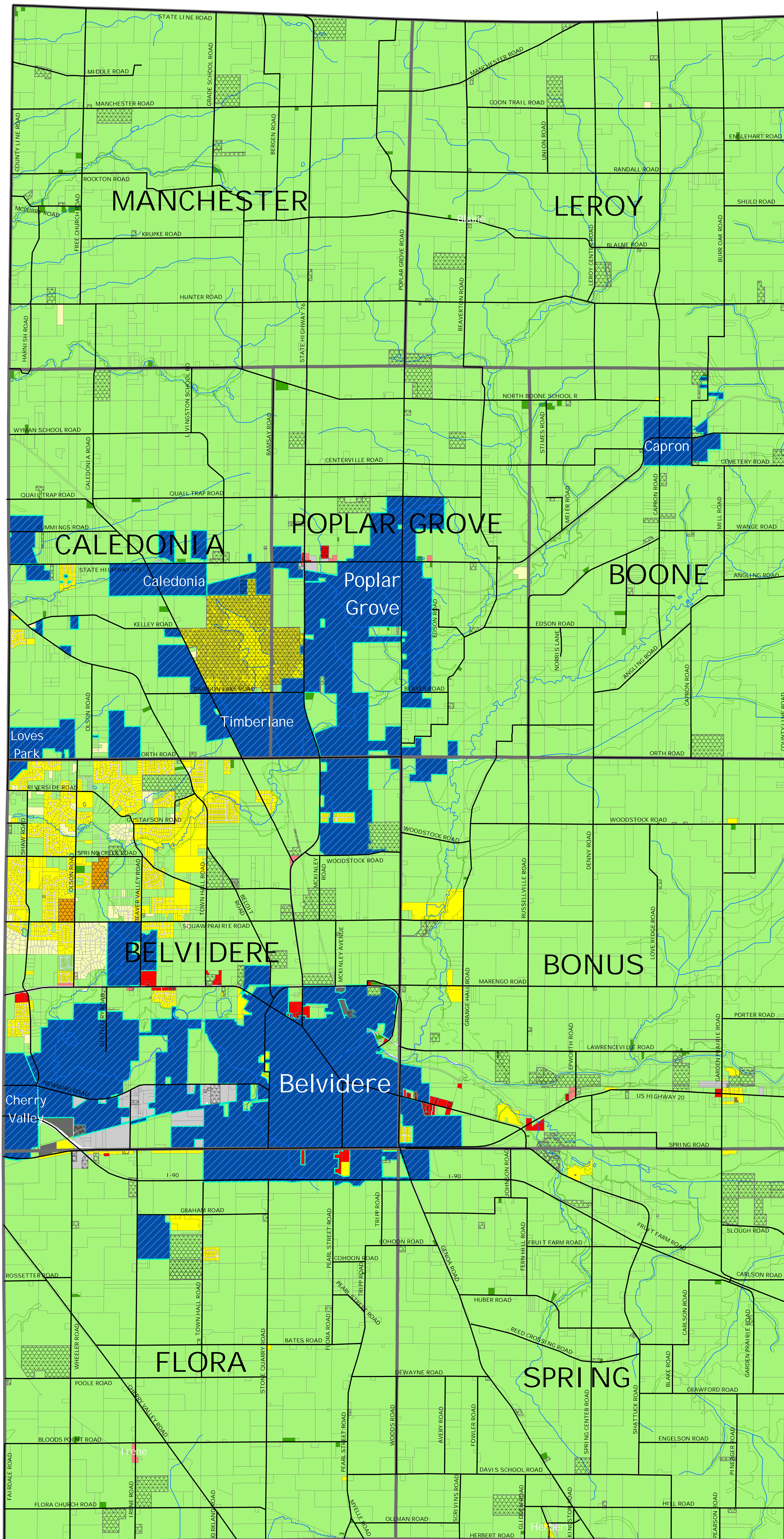


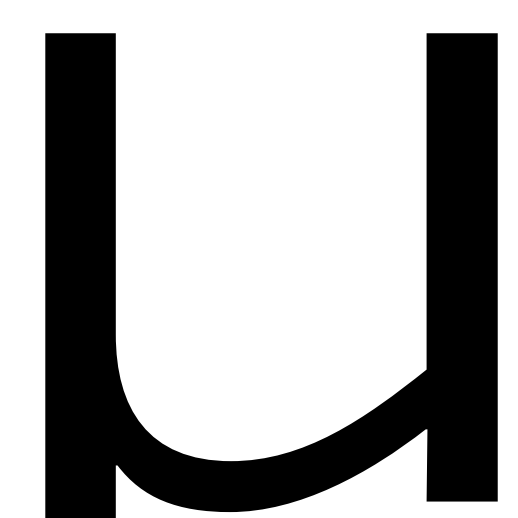


Boone County Zoning District Map

7-12-73



- A-1, Ag. Conservation
- A-2, Ag. Residential
- B-1, Local Business
- B-2, General Business
- I-1, Light Industrial
- I-2, Heavy Industrial
- R-1, Single Family
- R-2, General Residential
- R-C, Residential Conservation
- R-S, Residential Estate
- 100 Year Floodplain
- Townships
- Special Use
- Incorporated Municipalities



Revisions

6-10-81	4-11-84	9-13-84	7-31-89	12-22-89
4-12-90	7-25-90	9-27-90	8-6-91	2-29-92
6-2-92	10-15-92	5-14-93	1-24-94	3-30-95
9-29-95	1-29-96	6-10-97	9-28-98	12-26-98
7-30-99	5-31-01	2-20-02	9-23-02	5-23-03
8-12-03	7-08-04	3-7-05	6-21-05	10-17-05
1-04-06				

This map is the Zoning District Map referred to in Section 3.2 Zoning Map of the Boone County Zoning Code

This map is a general representation of approved zoning districts and is subject to change on a regular basis upon action of the Boone County Board. Exact descriptions and boundaries of the represented zoning districts are on file in the Belvidere - Boone County Planning Department, Boone County Courthouse, 601 N. Main St., Belvidere, IL 61008.

Prepared by the
Belvidere - Boone County
Planning Department
2-20-02